

Specifications

Model	CHO3003
Pick Up Element	SONY 1/3" CCD
Effective Picture Elements (H*V)	NTSC: 510×492, PAL: 500×582
Horizontal Resolution	420 TV Lines
S/N Ratio	> 48dB
Clock Frequency (MHZ)	NTSC:19.0699 , PAL:19.3125
Scanning System	2:1 interlace
Minimum Illumination	0 Lux (with IR LED ON)
Synchronous System	Internal, Negative sync.
Auto Electronic Shutter	NTSC: 1/60~1/100,000, PAL: 1/50~1/100,000
Gama Characteristic	0.45
IR Project Distance	20 Meters (with 23 Unit Infrared LED)
IR Status	<10 LUX by CDS
IR Power On	CDS Auto Control
Video Output	1Vpp,75 Ω
Auto Gain Control	Auto
Power/Current	12VDC(+/-10%)/300mA
Lens	3.6 mm /F 2.0 (optional: f 2.5 / 6.0 / 8.0 / 12mm)
Dimensions	3.7" Diameter × 2.7" (H)
Weight	1 lb
Storage Temperature	-30~ +60°C
Operating Temperature	-10~ +45°C

Packing List

No	Name	Model	Number
1.	Aluminum Dome Day/Night IR Camera	CHO3003	1
2.	User Guide	CHO3003	1
3.	Power Adapter	DC12V	1

LIMITED WARRANTY

This warranty remains in effect for one year from the date of purchase. Except as specified below, this warranty covers all defects in material and workmanship. The following are not covered: Damage caused by accident, misuse, abuse, product modification or neglect, damage occurring during shipment, damage from failure to follow instructions contained in the owners instruction booklet, damage resulting from the performance of repairs by someone not authorized by Choice Select, or any claims based on misrepresentations by the seller. This warranty does not cover incidental or consequential damages. It does not cover the cost of removing or reinstalling the unit. This warranty is void if the serial number has been removed or defaced.

This warranty gives you specific legal rights. You may also have other rights which vary from state to state. Some states do not allow the exclusion or limitation of incidental or consequential damages or limitations on how long an implied warranty lasts so the above may not apply to you.

HOW TO OBTAIN SERVICE

Please call us at (800) 844-9555 Monday-Friday, 8am - 5pm. We may direct you to an authorized dealer/technician or request that you return the product for repair. You must present the original bill of sale to establish the date of purchase.

Please do not ship your product to us for repair without prior authorization. You are responsible for transportation of your product and payment of any shipping charges. If the repairs are covered under warranty, we will pay the return shipping charges.

CHO3003 Color Camera

Aluminum Dome Day/Night IR Color Camera



Note: Before providing power for the camera, please read this User Guide in detail!

Do not attempt to disassemble the camera. Doing so may void your warranty. No user-serviceable parts inside.

**Choice
Select
CHO3003**

■ PRODUCT OVERVIEW

* Sensor (CCD)

SONY 1/3" CCD Sensor.

* Auto Gain Control (AGC)

Built-in auto gain control (AGC) circuit. The color camera can get high definition picture in low LUX condition.

* Auto Electronic Shutter (AES)

Built-in auto electronic shutter function. The color camera's AES speed can reach **1/100,000**.

* Gama Characteristic

Camera Gama characteristic is **0.45**.

* Scanning Mode

NTSC or PAL mode.

* Night-time Vision

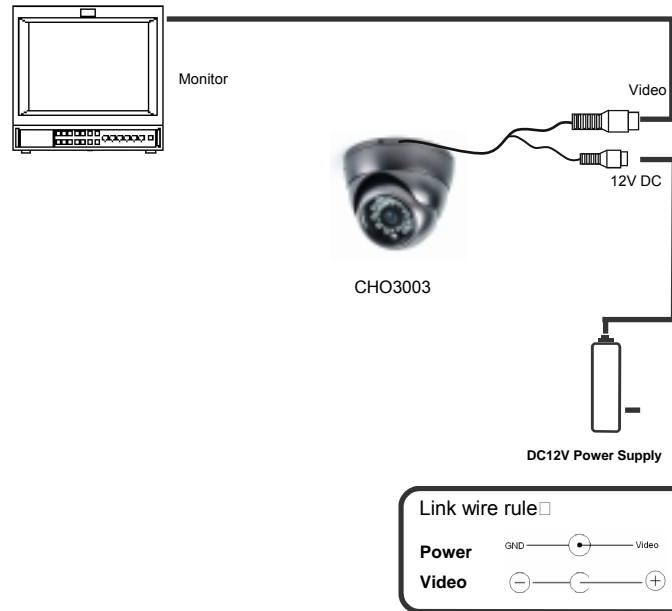
0 LUX with IR LEDs ON.



Notes

- Use only the included power supply.
- When using the camera in lightening conditions, be sure to install surge-protection device, or disconnect power supply plug and cable.
- In order to capture high quality pictures, the power supply's cable and video output cable should not be too long.

■ CONNECTING



■ TROUBLESHOOTING

1. No Picture after providing power.

Possible power supply voltage abnormality.
Check for proper power supply voltage and polarity.
Ensure that all the connecting cables and monitors are hooked up properly.

2. Interference (hum bars) are moving through the picture.

Check the monitor and peripheral equipment used.

3. The picture background changes color continuously.

The fluorescent light's electromagnetic field can cause color roll. This is a normal phenomenon.
Reduce the number of fluorescent lights, or increase the distance between the camera and the fluorescent lights.

4. The picture quality is poor or "fuzzy".

This is usually due to poor quality cables or poor connections.
Ensure that all the connecting cables and monitors are hooked up properly, or switch to a higher quality connecting cable.

■ INTRODUCTION

The CHO3003 IR Color Camera features the latest SONY technical of sensor and driver. This day/night, aluminum dome model features a rotating, vandal-proof housing, and will provide rich color, high definition pictures. Easy to install and convenient to use, it will adapt to most CCTV systems.

Please read this instruction manual carefully to ensure proper use of the product.



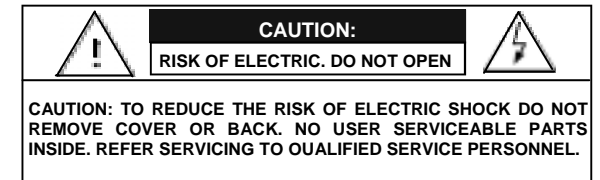
To prevent fire or shock hazard, do not expose the unit to prolonged contact with water.



This symbol is intended to alert the user to the presence of important operating and maintenance (servicing) instructions in the literature accompanying the appliance.



This symbol is intended to alert the user to the presence of uninsulated "dangerous voltage" within the product's enclosure that may be of sufficient magnitude to constitute a risk of electric shock to persons.



CAUTION:

To prevent electric shocks and risk of fire hazards, do NOT use other than specified power source.



- Please note the camera's operating temperature and environment requirements. Avoid using the camera at too high or too low temperatures.
- Never position the camera to face the sun or a bright object. This it might damage the CCD.
- Do not mount the camera near a heat source.