



FILM SCREENS
VIVID

DELUXE SERIES
USER MANUAL

CONTENTS

VIVID MODELS

VFS390SM, VFS3120SM, VFS3108SM



INTRODUCTION

04

- copyright
- included in box

INSTALLATION

06

- suspending installation
- wall/ceiling installation
- counter-sunk installation

OPERATION

08

- electrical connections
- operation
- fine adjustment
- explanation of the adjusting screws

CONTROL

12

- IR-transmitter/receiver
- programming an IR-transmitter
- blinking codes
- programming an external remote
- re-assigning the buttons

FEATURES

16

- Exclusiv-LAN Receiver
- Projection Screen

INTRODUCTION

Dear Customer!

Congratulations on making your purchase. We hope you enjoy using your new projection screen.

In order to make each viewing a unique video-cinema experience, we have provided this user manual containing detailed information about installing and operating your new projection screen.

Be sure to read through all the information in this manual before using and/or attempting to install the equipment.

Please note that your warranty will become void in the event that the equipment is handled, installed, or operated incorrectly.

The contents of this user manual will guide you through the proper handling, installing, and operating of your new Vivid projection screen.

Included in Box:

- projection screen (a)
- projection screen end caps (b)
- additional receiver w/ bracket (c)
- IR-transmitter w/ bracket (d)
- white network cable (e)
- mounting hardware (f)



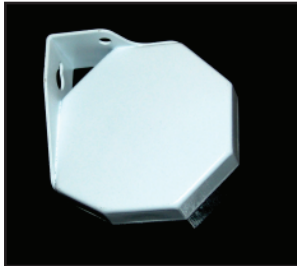
Projection screen (a)



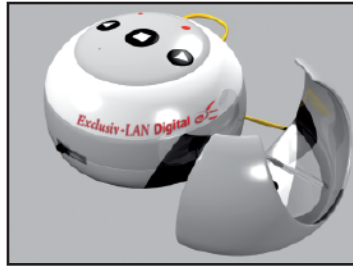
IR-transmitter
w/ bracket (d)



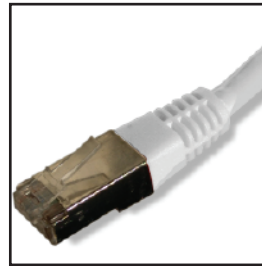
Mounting Hardware (f)



Projection screen
end caps (b)



Additional receiver
w/ bracket (c)



White network cable (e)

DECLARATION

The projection screen was checked, tested and found to be faultless before shipment was effected.

INSTALLATION

General Information

Regardless of which installation method you choose, the Vivid projection screen must be installed horizontally and next to a solid surface.

Please make sure that you use adequate materials that are suitable for the type of installation you choose. Sturdy and reliable structures are recommended.

Select the type of installation that is best for you.

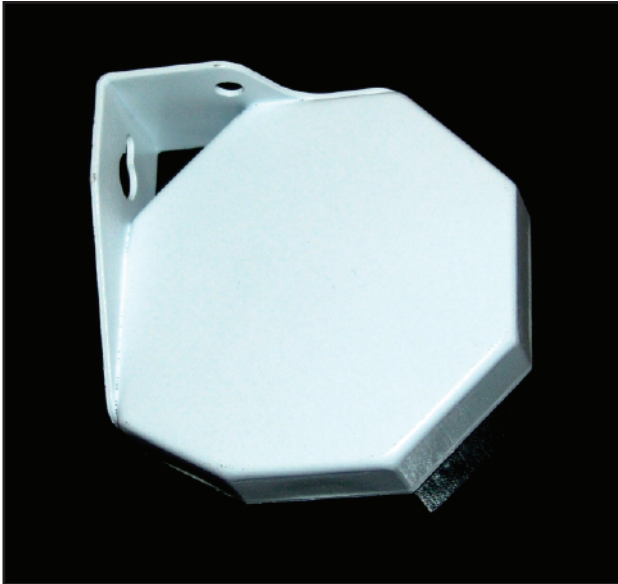


Projection screen end caps for suspending installation

Suspending Installation

1. Screw the hooks into the holes of the projection screen end caps.
2. Hang the screen on the hooks.

NOTE: Chains and clamp screws are not provided. If you choose to use chains, cables, or thread rods when installing, be sure to provide a sturdy sub-structure for the installation. Thread rods must be fitted based on the length of the projection screen.



Projection screen end caps with doweling
for wall and ceiling installation

Wall/Ceiling Installation

Install the screen using screws through the holes located on the back of the end caps of the frame. For installation onto plaster, plasterboards, etc. suitable mounting material should be used.

Counter-sunk Installation

For suspended ceiling installations, the projection screen should be installed along the wall. This installation requires a corresponding access opening in the suspended ceiling.

OPERATION

Electrical Connections

The projection screen operates with a voltage of 120V/1A/60HZ and is connected to the electricity network by a 3-prong plug. All connections are already completely assembled on the right side of the projection screen. Also included in the box is the infrared receiver which is programmed to the enclosed remote control. Therefore, your Vivid projection screen is ready to use immediately.

NOTE: The drive unit has a thermal overload protection which is automatically activated during non-stop operation and turns off the motor. Wait a few minutes for the reset.

Operation

Before you start to operate the projection screen, the adhesive strips and the brackets must be removed.

To operate please proceed as follows:

1. Plug the 3-prong plug into the power socket.
2. There will be a light glow visible in the IR-eye (red control dot on the screen) when the equipment is ready to operate.
3. After the screen has been connected to a power source it is ready for use and can be operated using the included remote. (Further adjustment or calibration is not required)
4. Push the DOWN button on the receiver or on the remote.

5. The projection screen will extend down to the bottom position. Pressing STOP button will allow screen to stop at any position.

6. Push the UP button on the receiver or on the remote.

7. The projection screen will retract back to its original position.

Fine Adjustment

The adjustments have already been made by the manufacturer and should normally not require re-adjustment. However, you can alter the adjustments of the UP and DOWN positions by proceeding as follows:

1. Please ensure switches are in the "off" position before you begin making adjustments.

2. When testing the adjustment, you must always be in position to turn the screen off manually. For instance, unplugging the device from the power source.

3. The projection screen canvas can be severely damaged if it is set to be capable of going UP too high, or going DOWN too low.

4. The alternative adjustment settings can be found on the side opposite the motor.

Distribution of the cables in the receiver device:

blue = neutral
brown = downwards
black = upwards
yellow = ground
green = ground

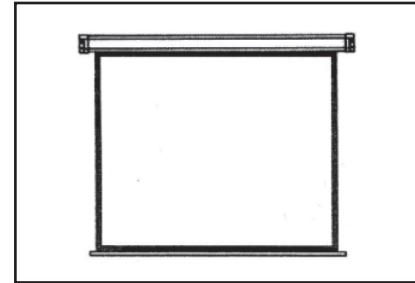
Explanation of the Adjusting Screws

Adjustment final upper position:

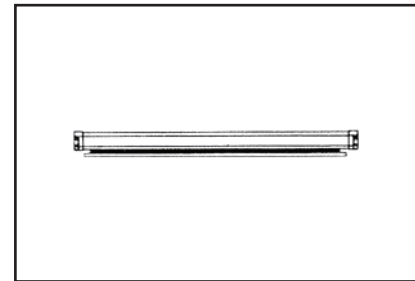
This adjusts the UP position of the projection screen. Turning the adjustment screw clockwise causes the screen to stop earlier. Turning the adjustment screw counter-clockwise causes the screen to be retracted farther. *Be extremely careful when turning the screws!* Always check your adjustments to be sure positioning is correct.

Adjustment final bottom position:

This adjusts the DOWN position of the projection screen. To lengthen the screen, extend it slightly and turn the adjustment screw clockwise. Retract screen and check if the adjustment is set so that the screen stops in the correct position. If necessary, stop the screen manually and repeat the procedure until the setting is correct. Turn the adjustment screw counter-clockwise to shorten the length of the screen DOWN position.



Adjustment final upper position



Adjustment final bottom position

CONTROL

You have the choice of controlling the projection screen via the IR-transmitter directly or via Exclusiv-LAN.

IR-Transmitter / Receiver

The projection screen is provided with an IR-receiver (infrared receiver) integrated into the screen. With the help of the IR-transmitter, you have the option to activate the IR-receiver and to directly control the screen without a control cable. The IR-receiver is only visible for you as a user by a red control lamp on the frame. The range of the IR-transmitter is 4-6 meters (13-19 ft) depending on

visibility and location. The distance between projection screen and transmitter should amount to at least 1 m (3 ft).

The Programming Process of the IR-Transmitter

Start the programming process by activating the low lying button intended for this purpose with the help of a pointy object. It is located on the left side of the transmitter. Activation of the process is indicated by the illumination of the LED display in the upper right corner.

LED is a light-emitting diode which serves as a control lamp. Now program the receiver by pushing the buttons in sequence and by keeping them pushed for the duration of one second. A short blinking of the receiver confirms your respective entry. Continuous illumination requests you to make your next entry.



IR-Transmitter / Receiver

1. Up
2. Stop
3. Down

During this procedure make sure you do not keep the buttons pushed for too long.

When the programming procedure for the three control buttons is completed the LED display goes out.

Should the execution not achieve the desired results then please repeat the programming process.



IR-transmitter

Blink Codes

The projection screen as well as the switching unit are provided with three different codes which reflect the functional instructions you selected in the form of blinking.

Rapid blinking with a dark-colored illumination:
STOP button was pressed.

Rapid blinking and illuminating:
DOWN button was selected.

Slow blinking followed by control cable of the three control buttons concluded, rapid blinking and continuous illumination: *UP* button was pressed.

Programming of an External IR Remote

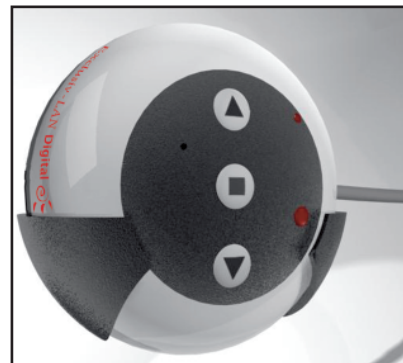
The remote control:
In order to program an external remote control to the switching unit integrated in the projection screen it must be equipped with the international transmission code RC-5.

Remote controls from the manufacturer SONY for example, operate with a different coding and are therefore not suitable for this type of programming.

Additional Receiver

The additional receiver operates with a digital code. The connection between projection screen and switching unit is established via network cable and calls itself Exclusiv LAN.

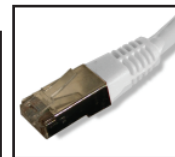
Exclusiv LAN is a coordinated, independent network for the projection screen media sector. Plug the network cable in the connection of the control unit and the projection screen intended for it.



Additional receiver



Network connection in the projection screen



The network cables are available in various colors. Maximum length: 0,1 - 250m

The network cable is not suitable for use in a computer but rather exclusively intended for the use with this video-cinema-system. All equipment included in delivery and which can be additionally bought which have the marking "Exclusiv Home" are provided with an 8-pole network jack in order to connect them to the Exclusiv-LAN-network.

Therefore you can upgrade your video-cinema at any time to accommodate your wishes. This LAN-cable is easy to install and automates your media equipment.

The digital connection to the Exclusiv LAN has considerably

less errors than other systems and allows for wider ranges. In order to control the projection screen you can aim directly at the projection screen with the IR-transmitter or alternatively at the additional receiver. In this case please also maintain a distance of 1m.

Re-assigning the Buttons

As a standard the control unit is delivered with a right-sided cable connection. The technical configuration of the control unit however allows for a programming that enables the cable connection to be on the left side. For this purpose please

keep the stop-button pressed for five seconds. The assigned buttons of the upwards and downwards buttons alter this instruction. You can now rotate the entire control by 180°.

FEATURES

Exclusiv-LAN Receiver

Supply Voltage: 5V
(via Exclusiv-LAN)

Operating temperature: 10-40°C

Weight: 0,1kg

Maximum connection length: 0,1m - 250m
(for Exclusiv-LAN cable)

Maximum range: 6-8m
(of the enclosed IR remote controls)

Internal equipment: IR receiver RC5-format, possibility to connect Exclusiv-LAN (not a computer-LAN connection), alteration of the switching direction therefore the unit is rotatable, freely program-mable in order to be able to use other learnable remote controls with RC-5 code

Projection Screen

Supply Voltage: 5V

Output: 14W

Operating temperature: 10-40°C

Weight: dependent on size

Maximum range: 6-8m
(of the IR remote controls)

Internal equipment: IR receiver RC5-format,
possibility to connect Exclusiv-LAN (not a
computer-LAN connection!)



WWW.SKYWALKER.COM

9390 VETERANS MEMORIAL PKWY, O'FALLON, MO 63366 | 800.844.9555