


**Arlington Industries, Inc.**

 www.aifittings.com • E-mail: sales@aifittings.com  
 800/233-4717 • FAX 570/562-0646

## Low Voltage Mounting Brackets

Single through 4-gang brackets for installations on existing construction. Designed to install **LOW VOLTAGE Class 2 ONLY**.

**New!**

CATALOG NUMBER	UPC/DCI/NAED MFG #01 8997	UNIT PKG	STD PKG	DIM A	DIM B	DIM C	DIM D	DIM E
LV1	58175	10	100	5.460	4.250	2.500	1.690	1/4"-1"
LV2	10952	5	50	5.460	4.250	4.185	1.750	1/4"-1"
LV3	09600	5	50	5.570	4.250	6.000	1.700	1/4"-1"
LV4	09601	5	50	5.570	4.250	7.810	1.700	1/4"-1"

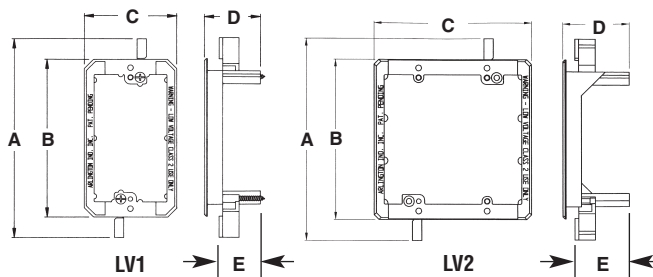
Dim E refers to wall thickness adjustment.  
 PATENTED.



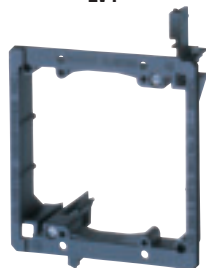
E253895 LR49636

### Features and Benefits

- Non-metallic – better than metal and costs less too!
- For communications, cable TV, computer wiring.
- CAT 5 listed
- Adjusts to fit 1/4" to 1" thick wallboard, paneling, or drywall
- Bracket is its own template for cut out
- Specially designed wing flips up when mounting screw is tightened for a secure mount.
- New 3 & 4-gang styles (not pictured)



LV1



LV2



### For Low Voltage Fire Alarm Installations too!

Arlington's LV2, for existing construction, and LVMB2, for new construction (shown below), can also be used for the installation of fire alarms.

## Low Voltage Mounting Brackets for New Construction

Designed to install **LOW VOLTAGE Class 2 ONLY**.

CATALOG NUMBER	UPC/DCI/NAED MFG #01 8997	UNIT PKG	STD PKG	DIM A	DIM B	DIM C	DIM D
LVMB1	14360	10	100	4.158	3.147	1.970	.375
LVMB2	14362	5	50	4.158	4.842	1.970	.375

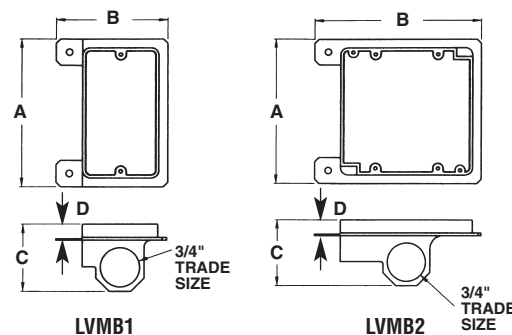
PATENTED.



E253895 LR49636

### Features and Benefits

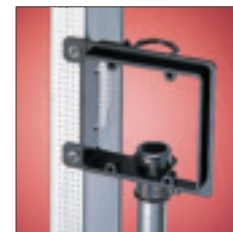
- Non-metallic
- For communications, cable TV, computer wiring
- Cat 5 listed
- Permits the use of 3/4" EMT
- Works with 1/2" or 5/8" drywall
- Available in single or double-gang models



LVMB1



LVMB2



www.aifittings.com • E-mail: sales@aifittings.com  
800/233-4717 • FAX 570/562-0646

**Arlington Industries, Inc.**



## Nail On Low Voltage Mounting Brackets for New Construction

Single and 2-gang brackets for the installation of *LOW VOLTAGE Class 2 ONLY*.



LVN1

LVN2

CATALOG NUMBER	UPC/DCI/NAED MFG #01 8997	UNIT PKG	STD PKG	DIM A	DIM B	DIM C
LVN1	00261	50	50	2.810	4.170	1.500
LVN2	00275	50	50	5.492	4.170	1.500

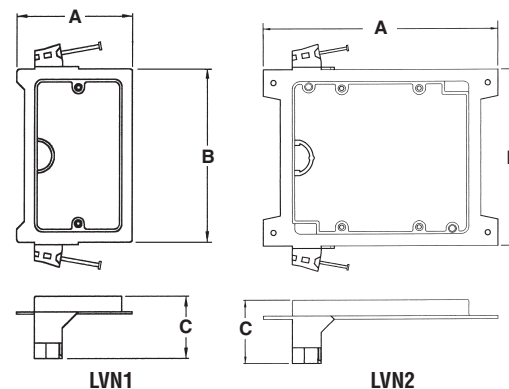
PATENTED. ADDITIONAL PATENTS PENDING.



E253895 LR49636

### Features and Benefits

- Non-metallic
- Built-in loop to tie off cable
- Eliminates pushback
- Comes complete with nails *parked in place* ready to install!
- Installs in 25% less time than steel or plastic mud rings



LVN1

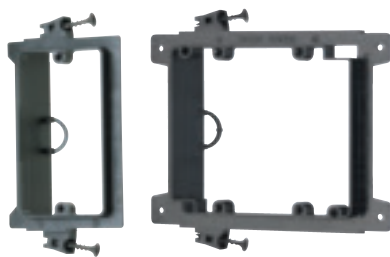
LVN2

**LOWER COST THAN STEEL MUD RINGS**



## Screw On Low Voltage Mounting Brackets for New Construction

Single and 2-gang brackets for the installation of *LOW VOLTAGE Class 2 ONLY*.



LVS1

LVS2

CATALOG NUMBER	UPC/DCI/NAED MFG #01 8997	UNIT PKG	STD PKG	DIM A	DIM B	DIM C
LVS1	00262	50	50	2.810	4.170	1.500
LVS2	00280	50	50	5.492	4.170	1.500

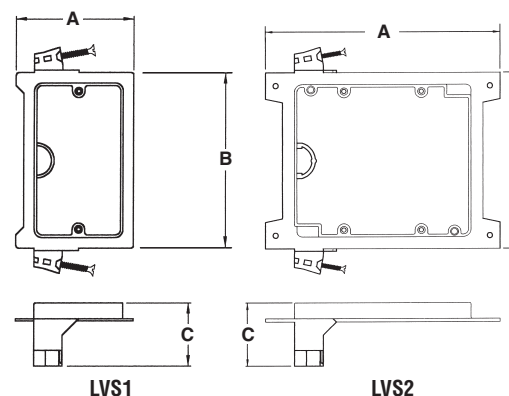
PATENTED. ADDITIONAL PATENTS PENDING.



E253895 LR49636

### Features and Benefits

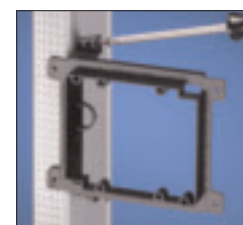
- Non-metallic
- Built-in loop to tie off cable
- Eliminates pushback
- Comes complete with screws *parked in place* ready to install!
- Installs in 50% less time than steel or plastic mud rings



LVS1

LVS2

**LOWER COST THAN STEEL MUD RINGS**




**Arlington Industries, Inc.**

 www.aifittings.com • E-mail: sales@aifittings.com  
 800/233-4717 • FAX 570/562-0646

## Power and Low Voltage Box for New Construction

Non-metallic, combination power and low voltage box. For power, phone/cable, and fiber optic installations.



CATALOG NUMBER	UPC/DCI/NAED MFG #01 8997	UNIT PKG	STD PKG	DIM A	DIM B	DIM C
LVD2	10957	25	25	3.625	5.360	5.000

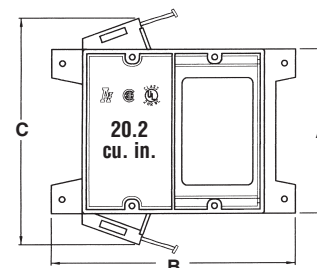
See page L-4 for Arlington's **Power & Cable/Phone Duplex Covers**.  
 PATENT PENDING.



E20643

### Features and Benefits

- Neatly installs power and phone/cable outlets together, in one location
- Saves time and money
- For wood stud installation, LVD2 features pre-installed nails ready for use
- For metal stud installation, LVD2 features screw holes on either side of the front flange (screws not included)
- Protects cable from damage
- For raceway, the low voltage side provides a combo 1/2" and 3/4" KO
- Two hour fire rating



**COMPETITIVELY PRICED!**

### For New Construction



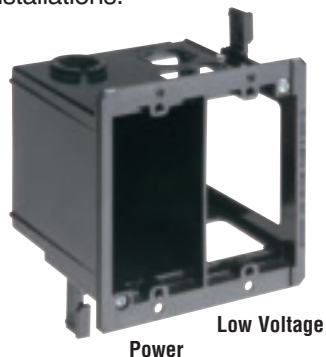
**Simple, Nail On Installation...**



**or Screw onto Metal Stud!**

## Power and Low Voltage Box for Existing Construction

Non-metallic, combination power and low voltage box. For power, phone/cable, and fiber optic installations.



CATALOG NUMBER	UPC/DCI/NAED MFG #01 8997	UNIT PKG	STD PKG	DIM A	DIM B
LVDR2	01000	25	25	4.250	4.185

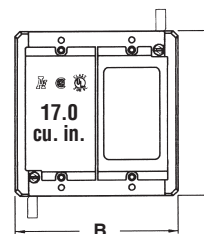
See page L-4 for Arlington's **Power & Cable/Phone Duplex Covers**.  
 PATENT PENDING.



E20643

### Features and Benefits

- Neatly installs power and phone/cable outlets together, in one location
- Saves time and money...competitively priced!
- Fast and easy installation...bracket is its own template for cut out
- Adjusts to fit 1/4" to 1-1/2" thick wallboard, paneling, or drywall
- For raceway, the low voltage side provides a combo 1/2" and 3/4" KO
- Protects cable from damage
- Secure mounting...as the mounting screws are tightened, the wings flip up, locking it in place
- Includes installed NM connector on power side
- Two hour fire rating



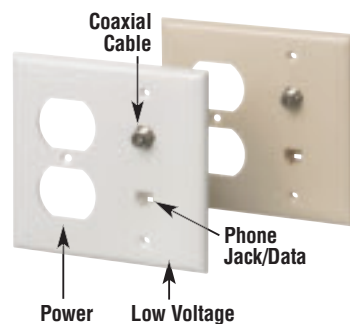
www.aifittings.com • E-mail: sales@aifittings.com  
800/233-4717 • FAX 570/562-0646

**Arlington Industries, Inc.**



## Power and Cable/Phone Duplex Cover

Non-metallic, combination receptacle and coaxial cable/phone/data cover together in one two-gang unit.



**New!**

CATALOG NUMBER	UPC/DCI/NAED MFG #01 8997	COLOR	UNIT PKG	STD PKG	DIM A	DIM B	DIM C
LVD2CA*	20006	Almond	10	10	4.500	4.567	.220
LVD2CI*	10999	Ivory	10	10	4.500	4.567	.220
LVD2CW*	10997	White	10	10	4.500	4.567	.220
LVD2HCA†	20008	Almond	10	10	4.500	4.567	.220
LVD2HCI†	11010	Ivory	10	10	4.500	4.567	.220
LVD2HCW†	11011	White	10	10	4.500	4.567	.220

\*For Power/Cable/Phone (RJ11, 4 wire)

†For Power/Cable/Data (CAT 5E, 8 wire)

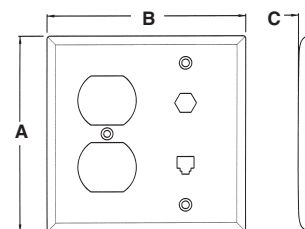
For best results use with Arlington's **Combination Power & Low Voltage Boxes** on page L-3.

PATENT PENDING.



### Features and Benefits

- Low cost...uses a standard duplex receptacle and features a built-in, labor saving, coaxial cable connector & phone jack!
- (2) Plugs provided for coaxial cable and phone jack when not in use
- Includes (3) mounting screws



## Recessed TV BOX™ for Power and Low Voltage

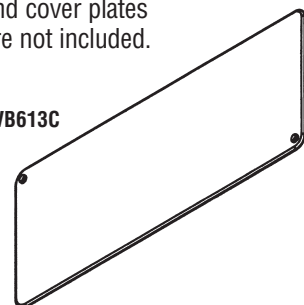
Non-metallic, combination power and low voltage box. For power and phone/cable/speaker/surround sound installations.



TVB613

**Note:** Receptacle and cover plates are not included.

TVB613C



CATALOG NUMBER	UPC/DCI/NAED MFG #01 8997	UNIT PKG	STD PKG	DIM A	DIM B	DIM C
TVB613	09630	1	1	7.000	17.000	3.880
TVB613C	09631	1	1	7.000	17.000	.127

PATENTED. ADDITIONAL PATENTS PENDING.

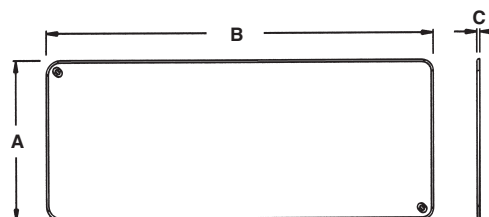
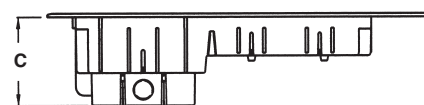
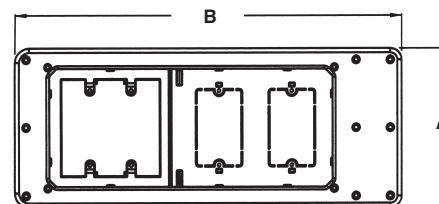


### Features and Benefits

- Perfect for flat screen plasma/LCD televisions
- For new or existing construction
- Recessed, so plugs do not protrude from wall
- Trim ring covers cut edge of drywall
- Trim ring (TVB613) and cover (TVB613C) are textured/paintable
- (2) low voltage mounts are built-in
- Low voltage separator provided for built-in 2-gang device box so power and low voltage can be combined



TVB613  
26.0 cu.in.



TVB613C





**Arlington Industries, Inc.**

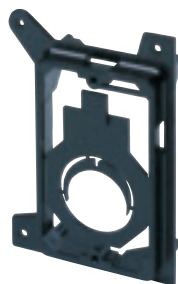
www.aifittings.com • E-mail: sales@aifittings.com  
800/233-4717 • FAX 570/562-0646

## Low Voltage Mounting Brackets for New Construction

Designed to install *LOW VOLTAGE Class 2 ONLY*. Mounts vertical or horizontal on wood or metal studs.



LVH1



LVH1K

### Features and Benefits

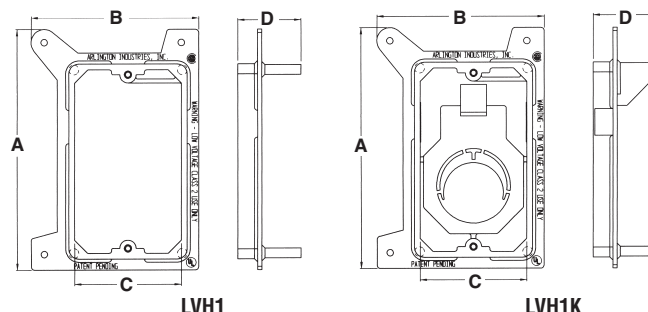
- Non-metallic
- Sturdy tabs provide extra-secure vertical or horizontal mounting of class 2, low voltage wiring.
- Convenient wire tie-off through slot at top
- Versatile LVH1K permits the use of 3/4" EMT or a 1" fitting.
- Costs 20% less than metal extension rings!

CATALOG NUMBER	UPC/DCI/NAED MFG #01 8997	UNIT PKG	STD PKG	DIM A	DIM B	DIM C	DIM D
LVH1	10979	50	50	4.552	3.187	2.000	1.205
LVH1K	10984	50	50	4.552	3.187	2.000	1.205

PATENTED. ADDITIONAL PATENTS PENDING.



E253895 LR49636



LVH1

LVH1K

### Installation Instructions...

#### For 3/4" KO

Break out the center of the LVH1K to use in 3/4" KO.



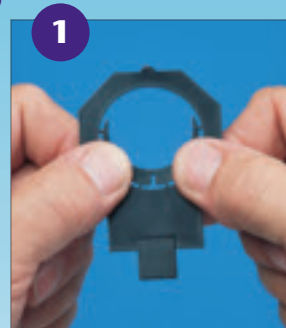
Vertical mounting - 3/4" KO.

**LVH1K mounted vertical on a wood stud.**



#### For 1" Fitting

To use with a 1" fitting, break the crescent shaped portion out of the circular opening.



Horizontal mounting - center removed for 1" fitting.

**LVH1K mounted horizontal on a wood stud.**



www.aifittings.com • E-mail: sales@aifittings.com  
800/233-4717 • FAX 570/562-0646

**Arlington Industries, Inc.**



## Insulating Bushings

Press fit. Holds firmly in place when pulling cables.



EMT50



RGD50

### For use with EMT.

CATALOG NUMBER	UPC/DCI/NAED MFG #01 8997	TRADE SIZE	UNIT PKG	STD PKG	DIM A	DIM B
EMT50	12200	1/2	100	1000	.531	.840
EMT75	12205	3/4	100	1000	.531	1.056
EMT100	12220	1	100	100	.625	1.280
EMT125	12225	1-1/4	100	100	.625	1.660
EMT150	12230	1-1/2	100	100	.625	1.915
EMT200	12235	2	50	50	.625	2.377
EMT250*	12240	2-1/2	25	25	1.225	3.062
EMT300*	12245	3	25	25	1.225	3.690
EMT350*	12250	3-1/2	25	25	1.231	4.187
EMT400*	12255	4	25	25	1.233	4.815

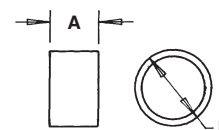
\*Can also be used with Rigid.

### For use with Rigid.

CATALOG NUMBER	UPC/DCI/NAED MFG #01 8997	TRADE SIZE	UNIT PKG	STD PKG	DIM A	DIM B
RGD50	51930	1/2	100	1000	.531	.989
RGD75	51932	3/4	100	1000	.531	1.185
RGD100	51933	1	100	100	.625	1.542
RGD125	51934	1-1/4	100	100	.625	1.891
RGD150	51935	1-1/2	100	100	.625	2.062
RGD200	51936	2	50	50	.625	2.655



E105706 LR49636

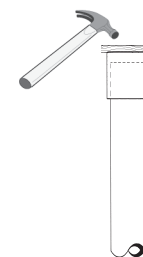
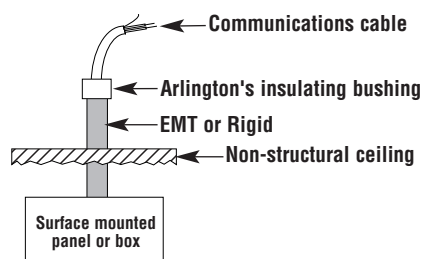


Meets 2005 NEC code requirements for 300-15(c) protection. Listed for use in environmental air handling spaces per 2005 NEC code requirements 300-22(c).

Arlington's Insulating Bushings protect cables from abrasion by the conduit. Examples: Power, Cable TV, computer datalines, telephone/modem, audio/video cables, alarm systems, security systems. Conduit is often used to protect cables where damage could occur in a house or building.



Example: Telephone cable protected by EMT insulating bushing.



Place board over bushing and tap onto EMT or Rigid with hammer.


**Arlington Industries, Inc.**

 www.aifittings.com • E-mail: sales@aifittings.com  
 800/233-4717 • FAX 570/562-0646

## THE LOOP™

Hanger for communications cable support. For CAT 5, 6, 7 cable and fiber optic cable.



TL20



TL25



TL50

**TL50 holds up to a 5" diameter bundle of CAT 5 or fiber optic cable!**

CATALOG NUMBER	UPC/DCI/NAED MFG #01 8997	LOOP SIZE	# CAT 5 CABLES	UNIT PKG	STD PKG	DIM A	DIM B	LOAD RATING
TL20	38084	2"	60	100	100	11.375	.652	25
TL25	38085	2-1/2"	100	50	50	12.250	1.500	25
TL50	38086	5"	300	25	25	22.500	5.000	75
TL20P*	38087	2"	60	100	100	11.375	.652	25
TL25P*	38088	2-1/2"	100	50	50	12.250	1.500	25
TL50P*	38089	5"	300	25	25	22.500	5.000	75

\*"P" indicates UV Rated.

PATENTED.

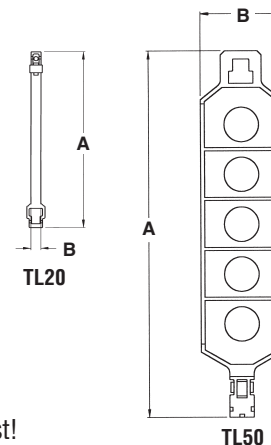


E161207 LR49636

**See Section M for Beam Clamps**

### Features and Benefits

- Easy to use...cheaper than trays!
- Flexible and non-metallic
- Holds 2" to 5" diameter bundle of CAT 5 or fiber optic cable — without damaging the cable.
- Available with or without UV rating
- Versatile mounting — rotates to any angle!
- TL25 holds the same amount of cable as a J-hook, at half the cost!



The **LOOP**™

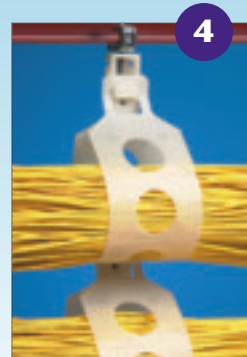
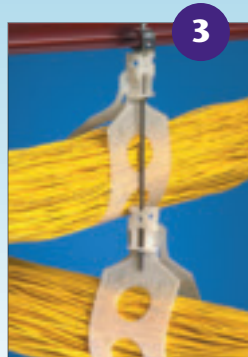
Listed for use in environmental air handling spaces per 2005 NEC code requirements 300-22(c).



### Single Hanger

1. Single LOOP mounted parallel to beam.
2. Single LOOP mounted perpendicular to beam.

(TL50 shown)



### Multiple Hangers

3. Stacked — perpendicular mounting
4. Stacked — parallel mounting

(TL50 shown)

www.aifittings.com • E-mail: sales@aifittings.com  
800/233-4717 • FAX 570/562-0646

**Arlington Industries, Inc.**



## Cable Standoffs

Positions non-metallic sheathed cable, phone/data cable, and coaxial cable. Installs with a screw or nail. Nail included with CS4.

**New!**



CS4



CS7

### CS4 Holds...

- One 14/3 to one 10/3
- Three 14/2 W/G to three 10/3

CATALOG  
NUMBER

UPC/DCI/NAED  
MFG #01 8997

STD  
PKG

DIM  
A

DIM  
B

DIM  
C

CS4

50174

100

4.100

.750

1.200

CS7

71007

100

3.490

.880

.740

**Note:** For position only.



E161207 LR49636

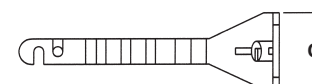
### Features and Benefits

- Positions cables at a safe distance from nailing surface
- CS4 provides a neat, organized cable installation and prevents tangles
- CS7 positions cable 2" from a furring strip or 2x4 stud
- CS7 features positive lock to keep cables in place
- Positions both flat and round NM cables
- Complies with 2005 NEC Article 300-4d

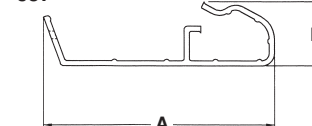
### CS7 Holds...

- Up to five runs of 12/2 non-metallic sheathed cable.
- Up to eight runs of Cat 5 cable.
- Up to four runs of Cat 6 cable.
- Up to five runs of coaxial cable.

CS4



CS7



## "D" RINGS

Non-conductive. Smooth bearing surfaces for easy wire management.



CATALOG  
NUMBER

UPC/DCI/NAED  
MFG #01 8997

WIRING  
SPACE

STD  
PKG

DIM  
A

DIM  
B

DIM  
C

DIM  
D

DIM  
E

D22

40022

2.25 x 2

100

2.756

4.867

4.381

3.137

1.498

D33

40033

3.25 x 3.25

100

3.768

6.117

5.631

4.387

2.553

D35

40035

3.25 x 5

100

3.730

8.268

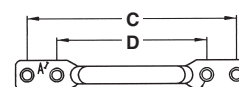
7.782

6.538

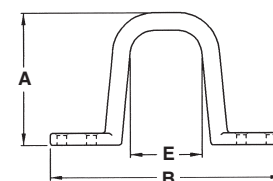
4.711

### Features and Benefits

- Designed with two mounting holes per side for several mounting methods
- Will not damage conductor insulation



Hole for #10 Screw (4) Places






**Arlington Industries, Inc.**

 www.aifittings.com • E-mail: sales@aifittings.com  
 800/233-4717 • FAX 570/562-0646

## Non-Metallic Bushings for Metal Studs

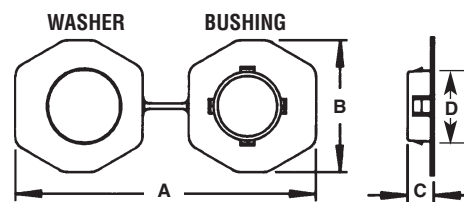


**FITS A  
STANDARD 1"  
KNOCKOUT**

CATALOG NUMBER	UPC/DCI/NAED MFG #01 8997	STUD SIZE	STD PKG	DIM A	DIM B	DIM C	DIM D
SB13	40115	2 x 4	500	5.670	2.500	.505	1.300
SB130	40130	2 x 4	100	5.670	2.500	.505	1.300

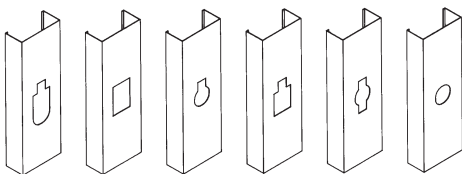
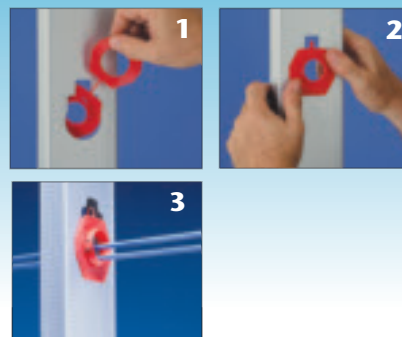
These bushings fit existing irregular shaped holes in metal studs, alleviating the need to punch holes in metal studs, weakening the structural member. Use these bushings to comply with paragraph 300-4(b)(1) of the 2005 NEC code which states that: "In both exposed and concealed locations where nonmetallic-sheathed cables pass through either factory or field punched, cut, or drilled slots or holes in metal members, the cable shall be protected by bushings or grommets covering all metal edges and securely fastened in the opening prior to installation of the cable."

PATENTED.

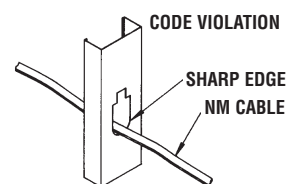


### Installation Instructions

To install these bushings in an irregular shaped hole, pass one end of the joined connector through the hole in the stud. Snap the bushing and the washer ends together. There's no need to separate the two halves. If a punched hole is required, the SB13 can be installed in a standard 1" trade size, round punched hole (1-3/8" diameter). Snap the bushing end into the hole.



Common hole configurations in metal studs.



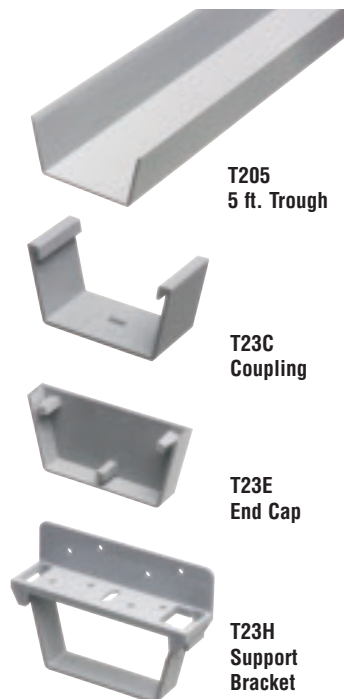
www.aifittings.com • E-mail: sales@aifittings.com  
800/233-4717 • FAX 570/562-0646

**Arlington Industries, Inc.**



## CABLEWAY™ Cable Runway Support System

Cable support system for either power or low voltage cable.  
For new construction or retrofit.  
Non-metallic.



*Rated for a maximum load of  
6 lbs/linear foot of runway.*

### Features and Benefits

- Secure, UL Listed as a cable support system
- For power or low voltage cable
- Support brackets attach directly to framing members, without structural damage
- Time saving system – no holes to drill through joists
- Brackets hold cables in place – open the bracket for easier cable insertion
- Slide-on trough protects and covers cable
- Install additional trough sections as needed and join them together with couplings
- Push-on end caps complete the job

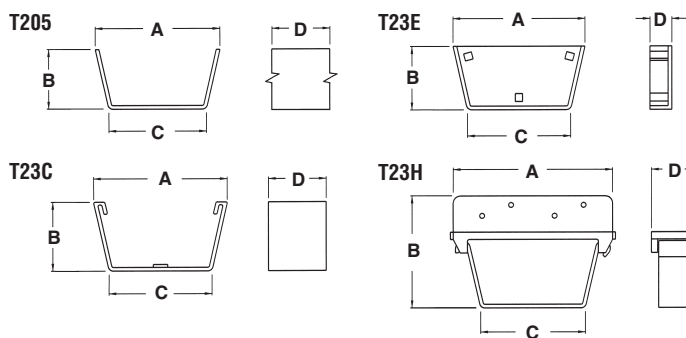
**New!**

CATALOG NUMBER	UPC/DCI/NAED MFG #01 8997	DESCRIPTION	STD PKG	DIM A	DIM B	DIM C	DIM D
T205	38060	Wire Tray - 5 Ft. Lengths	10	4.150	2.000	3.380	60.000
T23C	38061	Coupling	10	4.630	2.380	3.570	2.000
T23E	38062	End Cap	10	4.570	2.190	3.570	.760
T23H	38063	Support Bracket	25	5.500	3.880	3.620	1.500

PATENTS PENDING.

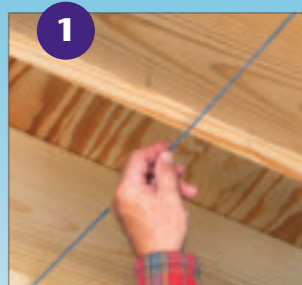


**FAST,  
TIME SAVING  
SYSTEM!**



### Installation Instructions

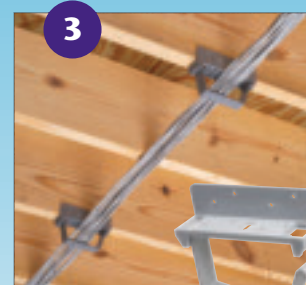
For a video demonstration go to...  
[aifittings.com/cableway\\_video/Cableway.html](http://aifittings.com/cableway_video/Cableway.html)



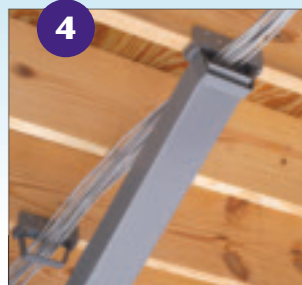
Strike chalk line in desired location for CABLEWAY.



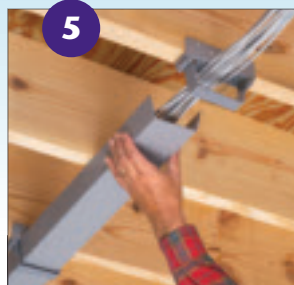
Install support brackets to framing members. Install brackets a maximum of 32" apart and within 16" of each end of the runway.  
*Tip: Use center window in bracket for alignment with chalk line.*



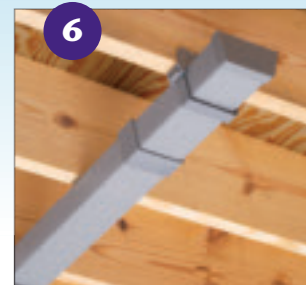
Run cables through the installed support brackets. Support can be opened if desired.  
*Tip: To open bracket for attachment or cable run, simply lift lower portion up and flex the catch inward slightly to open.*



When the desired number of cables is run, install cable trough by tilting the trough into the first bracket, sliding it under the installed cables. Raise the trough as it is inserted further into the support bracket.



When the trough sits level in the bracket, slide the trough back into a second bracket. Install additional sections, using couplings to join the pieces in the same manner. Couplings simply push-on to the ends of the raceway.



The last section of raceway may need to be cut to fit. Install end caps where the cable runway system terminates. End caps simply push-on to the ends of the trough.