



Arlington Industries, Inc.

www.aifittings.com • E-mail: sales@aifittings.com
800/233-4717 • FAX 570/562-0646

**ONE-BOX™
Non-Metallic
Outlet Boxes**

Versatile, non-conductive outlet boxes for new or retrofit construction. Mounts directly to a wood or steel stud.

New!

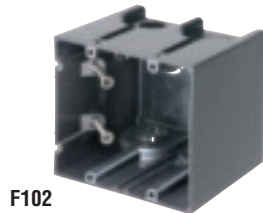
CATALOG NUMBER	UPC/DCI/NAED MFG #01 8997	DESCRIPTION / CU. IN.	UNIT PKG	STD PKG	DIM A	DIM B	DIM C
F101	43626	Single Gang Vert. / 22.5	50	50	2.280	3.720	3.510
F101H	43634	Single Gang Horiz. / 22.5	20	20	3.720	2.280	3.500
F102	43640	2-Gang Vert. / 42.0	25	25	4.110	3.740	3.510
F103	43641	3-Gang Vert. / 61.0	20	20	5.930	3.740	3.510
F104	43642	4-Gang Vert. / 80.0	20	20	7.740	3.740	3.510
F102D	43544	Voltage Divider	25	25	.233	3.560	3.400

PATENT PENDING.



F101

F102D



F102



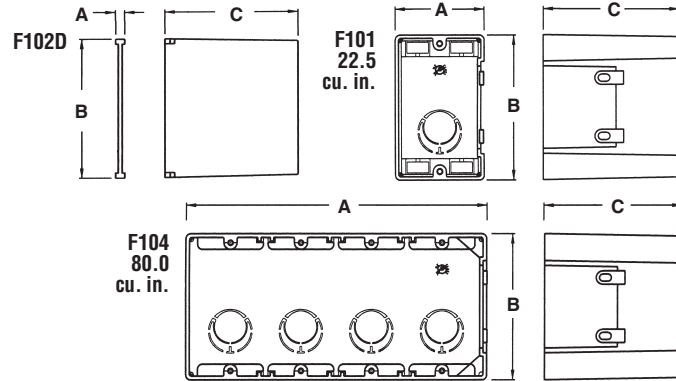
F101H



F103



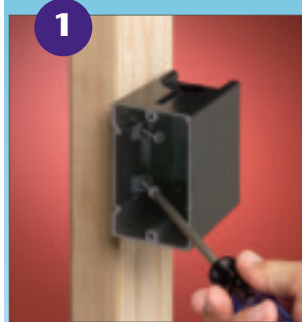
F104



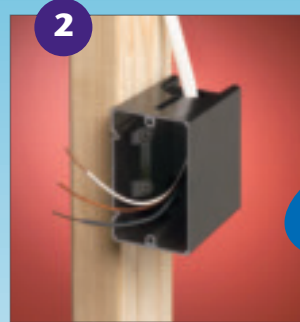
Features and Benefits

- Fast and easy to install
- Mounts directly to a wood or steel stud for a super secure installation
- Angled screws inside the ONE-BOX affix it firmly to the stud – it has no “wings” so there’s no wobble
- For both power *and* low voltage applications with the F102D voltage divider installed
- For a variety of wall thicknesses – the ONE-BOX is also removable, adjustable, and remountable
- Two hour fire rating

F101 Installation Instructions - NEW CONSTRUCTION



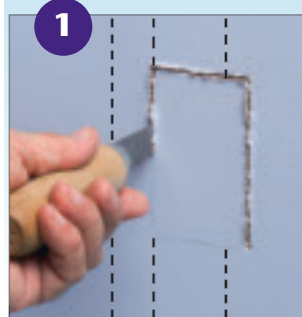
1 Attach ONE-BOX to wood or steel stud with captive installation screws. If the box is too far forward or back, simply back the screws out and reposition.



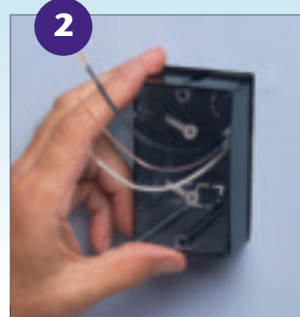
2 Pull wire through the knockout connector. (Ships with installed NM cable connector.)

MOUNTS DIRECTLY TO WOOD OR STEEL STUD

F101 Installation Instructions - RETROFIT



1 For old work, position ONE-BOX adjacent to stud. Use box as the template to cut hole.



2 Pull wire. Insert ONE-BOX.



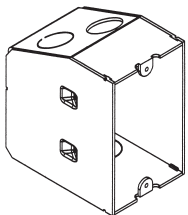
3 Mount ONE-BOX directly to stud with shipped in place screws.



www.aifittings.com • E-mail: sales@aifittings.com
800/233-4717 • FAX 570/562-0646

Steel ONE-BOX™ Outlet Box

Outlet box for new or retrofit construction. Mounts directly to a wood or steel stud.



New!

CATALOG NUMBER	UPC/DCI/NAED MFG #01 8997	DESCRIPTION / CU. IN.	UNIT PKG	STD PKG	DIM A	DIM B	DIM C
F101S	12519	Single Gang / 24.0	25	25	3.740	2.380	3.500

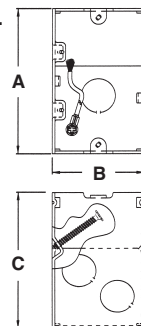


E170558 LR49636

Features and Benefits

- Fast and easy to install
- Mounts directly to a wood or steel stud for a super secure installation
- Angled screws provided inside the ONE-BOX affix it firmly to the stud – it has no “wings” so there’s no wobble
- For a variety of wall thicknesses – the ONE-BOX is also removable, adjustable, and remountable

24.0 cu. in.



ONE-BOX™ Non-Metallic Outlet Box with Flange

Versatile, non-conductive outlet box for new construction. Mounts directly to a wood or steel stud.



New!

CATALOG NUMBER	UPC/DCI/NAED MFG #01 8997	DESCRIPTION / CU. IN.	UNIT PKG	STD PKG	DIM A	DIM B	DIM C	DIM D
F101F	12520	Single Gang / 21.0	25	25	5.990	4.500	3.510	.240

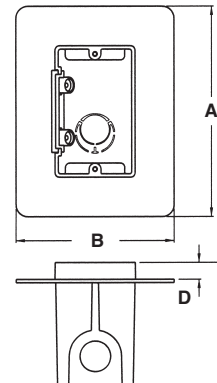


E170558

Features and Benefits

- Fast and easy to install
- Mounts directly to a wood or steel stud for a super secure installation
- Angled screws provided inside the ONE-BOX affix it firmly to the stud
- Flange forms a protective barrier against air infiltration
- Comes with (1) roll of caulk
- Two hour fire rating

21.0 cu. in.



Fan & Fixture Non-Metallic, Round Box with Flange

Versatile, non-conductive outlet box for new construction.



New!

CATALOG NUMBER	UPC/DCI/NAED MFG #01 8997	DESCRIPTION / STYLE	UNIT PKG	STD PKG	DIM A	DIM B	DIM C	DIM D
FB426F	12521	For 1/2" or 5/8" Drywall 16.0 Cu. In.	25	25	2.625	.475	4.250	6.250

PATENT PENDING.

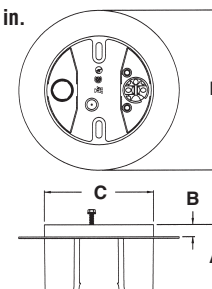


E170558 LR49636

Features and Benefits

- Flange forms a protective barrier against air infiltration
- Includes “parked” fan/fixture installation screws – ready for easy fan/fixture bracket installation
- Comes with (1) roll of caulk
- UL rated: 70 lb. fan, 200 lb. fixture; CSA rated: 50 lb. fan/fixture
- Two hour fire rating

16.0 cu. in.



Arlington Industries, Inc.

www.aifittings.com • E-mail: sales@aifittings.com
800/233-4717 • FAX 570/562-0646

Double Gang Box for Dryers & Appliances, Nail-on Style

New!

Non-conductive, 2-gang outlet box for new construction. Mounts directly to a wood stud. Nails included.



CATALOG NUMBER	UPC/DCI/NAED MFG #01 8997	DESCRIPTION / CU. IN.	UNIT PKG	STD PKG	DIM A	DIM B	DIM C
F202N	12522	Double Gang / 45.5	10	10	5.680	3.760	4.110

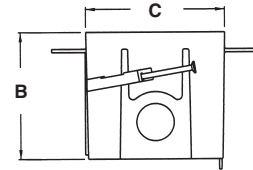
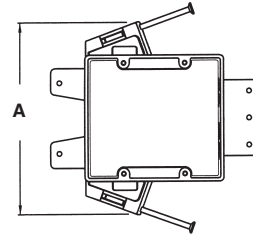
PATENT PENDING.



Features and Benefits

- Fast and easy to install
- Mounts directly to a wood stud for a super secure installation
- Perfect for dryers and ranges
- Supplied with NM842 (wire range: 1-8/2 to 1-4/2; 1-8/3 to 1-6/3) and NM95 (wire range: 1-14/2 to 1-6/2; 1-14/3 to 1-6/3) connectors
- Two hour fire rating

45.5 cu. in.



Double Gang Box for Dryers & Appliances, Screw-on Style

New!

Non-conductive, 2-gang outlet box for new construction. Mounts directly to a metal stud. Screws included.



CATALOG NUMBER	UPC/DCI/NAED MFG #01 8997	DESCRIPTION / CU. IN.	UNIT PKG	STD PKG	DIM A	DIM B	DIM C
F202S	12523	Double Gang / 45.0	10	10	4.380	3.760	4.110

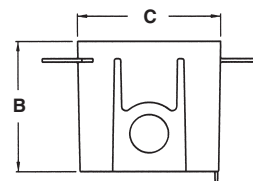
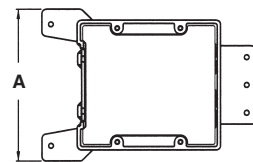
PATENT PENDING.



Features and Benefits

- Fast and easy to install
- Mounts directly to a metal stud for a super secure installation
- Perfect for dryers and ranges
- Provided, angled screws affix box firmly to the stud
- Supplied with NM842 (wire range: 1-8/2 to 1-4/2; 1-8/3 to 1-6/3) and NM95 (wire range: 1-14/2 to 1-6/2; 1-14/3 to 1-6/3) connectors
- Two hour fire rating

45.0 cu. in.



www.aifittings.com • E-mail: sales@aifittings.com
800/233-4717 • FAX 570/562-0646

Arlington Industries, Inc.



Small Diameter Sconce Boxes for New or Retrofit Construction New!

Non-metallic, 3-1/4" diameter sconce/fixture boxes with large interior volume. Three styles available for your construction needs.



FSC3212



FSC3212R



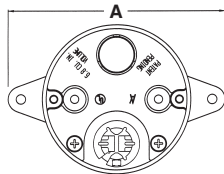
FSC3212S

Features and Benefits

- Ready to use, easy to install
- No loose parts – totally self-contained
- Ships with installed NM cable connector and captive fixture bracket installation screws
- Small diameter allows most sconce light canopies to cover the box, hiding it completely
- For retrofit construction: sconce lights up to 3 lbs. For nail-on and screw-on new construction: sconce lights up to 5 lbs.
- Two hour fire rating

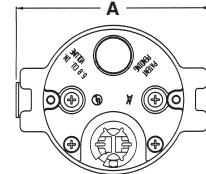
CATALOG NUMBER	UPC/DCI/NAED MFG #01 8997	DESCRIPTION/ ATTACHMENT	UNIT PKG	STD PKG	DIM A	DIM B	DIM C
FSC3212	43627	New Const. / Screw-On	50	50	4.748	3.250	1.240
FSC3212R	43633	Retrofit / Screws, Bracket	25	25	4.280	3.250	1.240
FSC3212S	43628	New Const. / Nail-On	25	25	4.760	3.250	1.240

PATENTS PENDING.



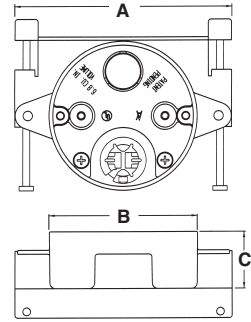
6.8 cu. in.

FSC3212



6.8 cu. in.

FSC3212R



6.8 cu. in.

FSC3212S

Installation Instructions

FSC3212 - NEW CONSTRUCTION WITHOUT BRACKET



Mounts directly to flat concrete block surfaces. Easy screw-on installation. **THERE'S NO NEED FOR ADDITIONAL FURRING STRIPS!**

FSC3212S - NEW CONSTRUCTION WITH BRACKET

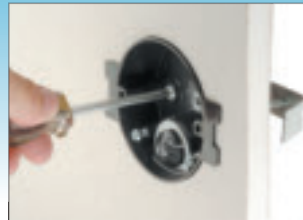


Flanges on bracket position box properly on stud to accommodate the drywall thickness. Easy nail-on installation.

Alternate Installation



FSC3212R - RETROFIT



Cut hole in drywall. Insert box and bracket. Box is secured by tightening screws that pull bracket against drywall. **FITS DOUBLE DRYWALL OR UP TO 1.90".**

USE THIS BOX TO CENTER A SCONCE LIGHT OVER A MIRROR!

Arlington Industries, Inc.

www.aifittings.com • E-mail: sales@aifittings.com
800/233-4717 • FAX 570/562-0646

Sconce Box for New Construction

New!

22.2 Cu. In. Volume

Non-metallic, 3-1/4" diameter sconce/fixture box with our largest interior volume. Nail-on style.



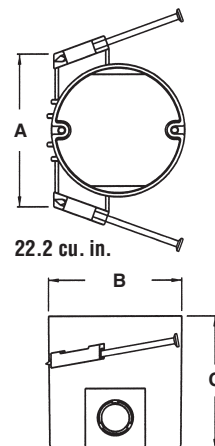
CATALOG NUMBER	UPC/DCI/NAED MFG #01 8997	DESCRIPTION/ ATTACHMENT	UNIT PKG	STD PKG	DIM A	DIM B	DIM C
FSC3232	12524	New Const. / Nail-On	50	50	3.730	3.250	3.250



INCREASED VOLUME CAPACITY!

Features and Benefits

- Ready to use, easy to install
- 22.2 cubic inch *SUPER-SIZE* capacity
- No loose parts – totally self-contained
- Ships with installed NM cable connector and captive fixture bracket installation screws
- Small diameter allows most sconce light canopies to cover the box, hiding it completely
- For sconce lights up to 5 lbs.
- Two hour fire rating



HOLE SAW BOX™ for Device

New!

Retrofit Construction

Non-metallic, 3-1/4" diameter sconce/device box for existing construction. Fits duplex receptacles and most GFCIs.



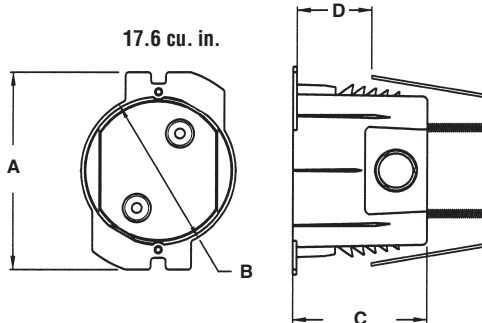
CATALOG NUMBER	UPC/DCI/NAED MFG #01 8997	DESCRIPTION/ ATTACHMENT	UNIT PKG	STD PKG	DIM A	DIM B	DIM C	DIM D
FSC3227R	12525	Retrofit / Screws, Bracket	25	25	4.100	3.220	2.780	1.540



SAVES TIME!
Quick, super-easy installation with a hole saw.



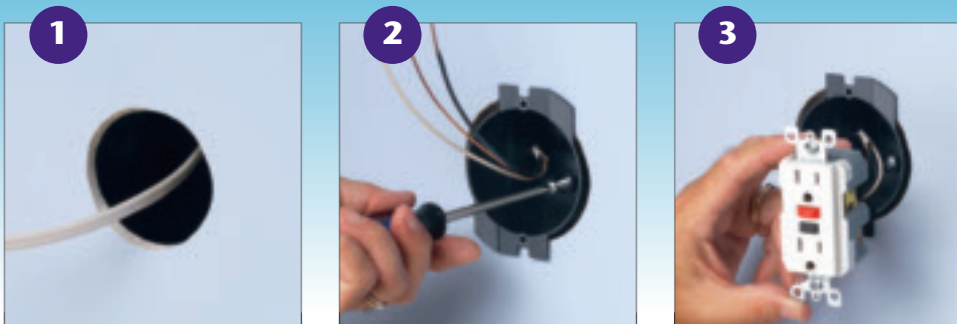
INCREASED VOLUME CAPACITY!



Features and Benefits

- Ready to use, easy to install
- 17.6 cu. inch *SUPER-SIZE* capacity
- No loose parts – self-contained
- Ships with installed NM cable connector and captive fixture bracket installation screws
- Comes with maxi-size cover plates; (1) duplex and (1) GFCI
- Saves time – installs with a 3-1/4" standard hole saw
- Saw teeth cut a path through the drywall for the device screws and hold the device firmly in place
- Rated for light duty 3 lb. fixtures
- Two hour fire rating

Installation Instructions



1 Cut hole with a 3-1/4" standard hole saw and pull wire. Push box through drywall. Built-in "teeth" create a path for device screws.

2 Pull NM cable through installed connector. Tighten bracket screws inside box to seat bracket securely against drywall.

3 Install device (GFCI shown) and provided maxi-size cover plate.

www.aifittings.com • E-mail: sales@aifittings.com
800/233-4717 • FAX 570/562-0646

Arlington Industries, Inc.



Recessed Indoor IN BOX™ for New & Retrofit Construction

New!

Non-metallic, recessed electrical box with trim plate. Accepts most single gang wiring devices and uses standard indoor wall plates or a GFCI cover plate.



Features and Benefits

- Recessed box allows items, such as furniture, to be placed closer to the wall
- Plugs don't extend past the wall like a regular box
- Trim plate is textured/paintable
- For power or low voltage applications

CATALOG NUMBER	UPC/DCI/NAED MFG #01 8997	DESCRIPTION / CU.IN.	UNIT PKG	STD PKG	DIM A	DIM B	DIM C	DIM D	DIM E	DIM F
DVFR1W	14330	Single Gang / 21.0	1	4	4.200	6.698	.750	3.301	5.926	3.875
DVFR2W	14331	Double Gang / 37.0	1	4	6.012	6.698	.750	5.113	5.926	3.875

PATENTED. ADDITIONAL PATENTS PENDING.

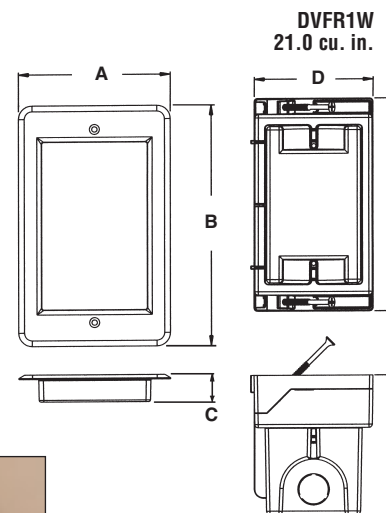


Canadian orders ship with grounding lug required by CSA.



Single Gang Indoor IN BOX includes...

Recessed box, trim plate, (1) standard duplex and (1) standard GFCI face plate, (1) NM cable connector, (2) mounting screws, and (2) installation screws.



Screws provided for fast and easy mounting to stud

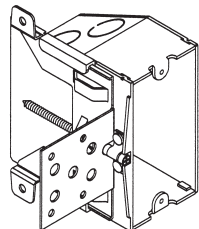


Attractive! DVFR1W shown.

Adjustable Steel Outlet Box

New!

Outlet box for new construction. Mounts directly to a wood or steel stud.



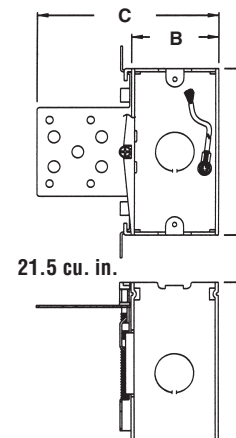
CATALOG NUMBER	UPC/DCI/NAED MFG #01 8997	DESCRIPTION / CU. IN.	UNIT PKG	STD PKG	DIM A	DIM B	DIM C	DIM D
FAS423	04255	Single Gang / 21.5	10	10	3.760	1.970	4.109	3.530

PATENT PENDING.



Features and Benefits

- Fast and easy to install
- Mounts directly to a wood or steel stud for a super secure installation
- For a variety of wall thicknesses
- Adjustable (up to 1") even after drywall is installed
- Adjusts to comply with the 2005 NEC Article 314.0

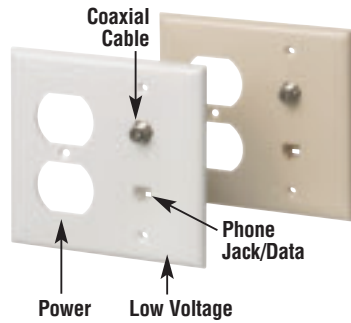


Arlington Industries, Inc.

www.aifittings.com • E-mail: sales@aifittings.com
800/233-4717 • FAX 570/562-0646

Power and Cable/Phone Duplex Cover

Non-metallic, combination receptacle and coaxial cable/phone/data cover together in one two-gang unit.



New!

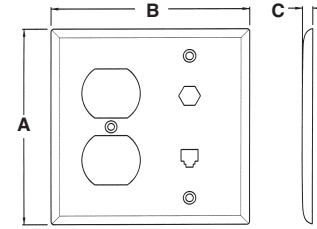
CATALOG NUMBER	UPC/DCI/NAED MFG #01 8997	COLOR	UNIT PKG	STD PKG	DIM A	DIM B	DIM C
LVD2CA*	20006	Almond	10	10	4.500	4.567	.220
LVD2CI*	10999	Ivory	10	10	4.500	4.567	.220
LVD2CW*	10997	White	10	10	4.500	4.567	.220
LVD2HCA†	20008	Almond	10	10	4.500	4.567	.220
LVD2HCI†	11010	Ivory	10	10	4.500	4.567	.220
LVD2HCW†	11011	White	10	10	4.500	4.567	.220

*For Power/Cable/Phone (RJ11, 4 wire)
†For Power/Cable/Data (CAT 5E, 8 wire)
For best results use with Arlington's **Combination Power & Low Voltage Boxes** on page L-3.
PATENT PENDING.



Features and Benefits

- Low cost...uses a standard duplex receptacle and features a built-in, labor saving, coaxial cable connector & phone jack!
- (2) Plugs provided for coaxial cable and phone jack when not in use
- Includes (3) mounting screws



Recessed TV BOX™ for Power and Low Voltage

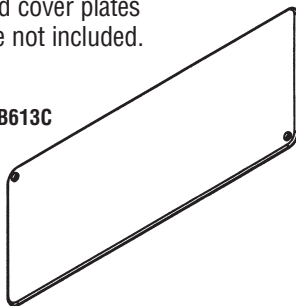
Non-metallic, combination power and low voltage box. For power and phone/cable/speaker/surround sound installations.



TVB613

Note: Receptacle and cover plates are not included.

TVB613C



New!

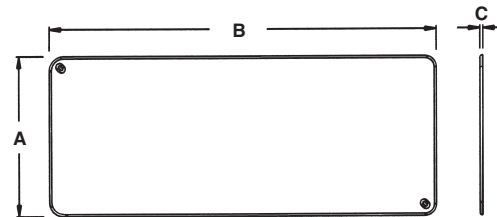
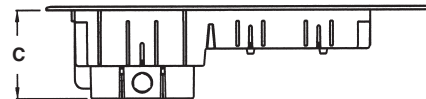
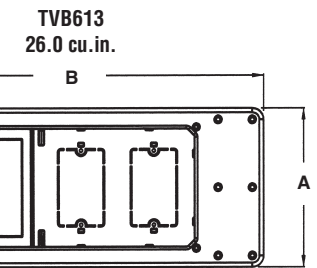
CATALOG NUMBER	UPC/DCI/NAED MFG #01 8997	UNIT PKG	STD PKG	DIM A	DIM B	DIM C
TVB613	09630	1	1	7.000	17.000	3.880
TVB613C	09631	1	1	7.000	17.000	.127

PATENTED. ADDITIONAL PATENTS PENDING.



Features and Benefits

- Perfect for flat screen plasma/LCD televisions
- For new or existing construction
- Recessed, so plugs do not protrude from wall
- Trim ring covers cut edge of drywall
- Trim ring (TVB613) and cover (TVB613C) are textured/paintable
- (2) low voltage mounts are built-in
- Low voltage separator provided for built-in 2-gang device box so power and low voltage can be combined



TVB613C

Miscellaneous

M-7

www.aifittings.com • E-mail: sales@aifittings.com
800/233-4717 • FAX 570/562-0646

Arlington Industries, Inc.



Box Extenders

Levels and supports the wiring device where the box is set back from the wall surface. Extends the box up to 1-1/2".



BE1



BE2

HEAVY-DUTY PLASTIC, UL LISTED!

CATALOG NUMBER	UPC/DCI/NAED MFG #01 8997	STD PKG	DIM A	DIM B	DIM C
BE1	40160	25	2.313	4.188	1.813
BE1BAG	51905	1 per Bag 100 Bags per Box	2.313	4.188	1.813
BE2	48960	25	4.100	4.188	1.813

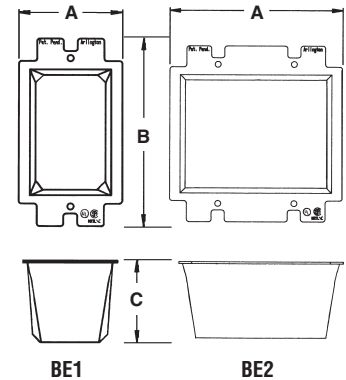
BE1BAG includes two #6 x 2" long screws.
PATENTED. ADDITIONAL PATENTS PENDING.



2 Hour Fire Rating

Features and Benefits

- Allows the contractor to comply with 2005 NEC Article 314.20
- Levels and supports the wiring device where the box is set back from the wall surface (adjusts up to a 1-1/2" box extension)
- Works in handy boxes and 4" square electrical boxes with plaster rings for single switches or receptacle
- Functions with all standard devices, switches, and GFCIs
- Manufactured from 105°C continuous use 94V0 rated flame retardant plastic for safer installations



BE1 Installation Instructions

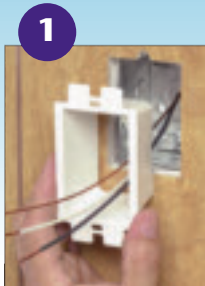
To install without removing device wires, tilt the device through the BE1 at a slight angle, straighten it and tighten the screws!

Problem...

Electrical box set back from wall surface.



SOLUTION...



1
Pull wires through, then press the BE1 firmly into the electrical box.



2
Attach wires to receptacle. Then tighten screws for a level, fully supported, code compliant installation.



Arlington Industries, Inc.

www.aifittings.com • E-mail: sales@aifittings.com
800/233-4717 • FAX 570/562-0646

Ceiling Box Extender

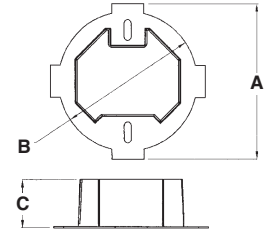
For set back ceiling boxes. Fits 3-1/2" and 4" round or octagonal boxes.



CATALOG NUMBER	UPC/DCI/NAED MFG #01 8997	UNIT PKG	STD PKG	DIM A	DIM B	DIM C
BE1R	40161	25	25	4.850	4.350	1.500

PATENTED.

 E170558 LR49636



Features and Benefits

- Complies with 2005 NEC Article 314.20
- Extends box up to 1-1/2" to bring it level with ceiling surface
- Trims to accommodate shallow boxes or to avoid obstructions
- Manufactured from 105°C continuous use 94V0 rated flame retardant plastic for safer installations

HEAVY-DUTY PLASTIC, UL LISTED!

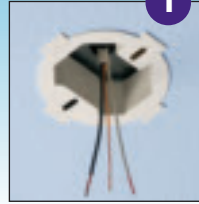
Installation Instructions

Problem...

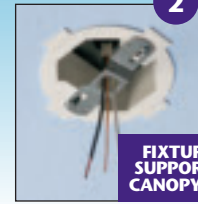


Ceiling box is set back from surface.

SOLUTION...



Non-conductive BE1R Box Extender installs easily and extends box flush with ceiling surface.



Proceed with fixture installation. Flexible, plastic BE1R protects against wire damage.

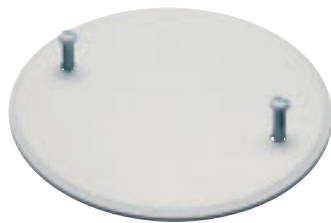


Fixture is installed and a level, code compliant installation is complete!

FIXTURE BAR FIRMLY SUPPORTED for EASIER CANOPY INSTALLATION!

Box Covers

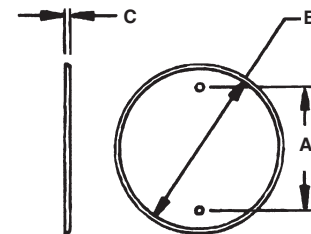
Covers 4" round or octagonal boxes. Non-metallic. Will not rust.



CATALOG NUMBER	UPC/DCI/NAED MFG #01 8997	BOX SIZE	UNIT PKG	STD PKG	DIM A	DIM B	DIM C
CP40	15040	4"	1	40	3.500	4.750	.150

Features and Benefits

- Paintable to blend with any wall or ceiling
- Comes complete with white painted screws to blend with cover
- Reusable and flexible
- Will not rust or discolor



www.aifittings.com • E-mail: sales@aifittings.com
800/233-4717 • FAX 570/562-0646

Arlington Industries, Inc.



Ceiling Box Cover

Covers unused 3-1/2" and 4" round and octagonal boxes prior to the installation of a fan or fixture. Non-rusting, paintable plastic.



CATALOG NUMBER	UPC/DCI/NAED MFG #01 8997	BOX SIZE	UNIT PKG	STD PKG	DIM A	DIM B	DIM C
CP3540	54090	3-1/2 & 4"	1/Bag	50 Bags	.437	5.390	.812

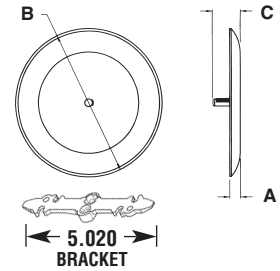
Two #8-32 x 3/4" flat head screws and bracket are included.
PATENTED.



E170558 LR49636

Improved Features

- Deeper cover works with *pan* boxes without the need to cut the post
- Use #8 screws provided or back out existing screws to accept notched bracket
- Bracket has two separate cover mounting options. Threaded post pushes in, for flat ceilings, or screws on for textured/uneven ceilings.



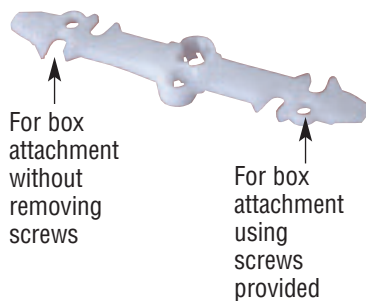
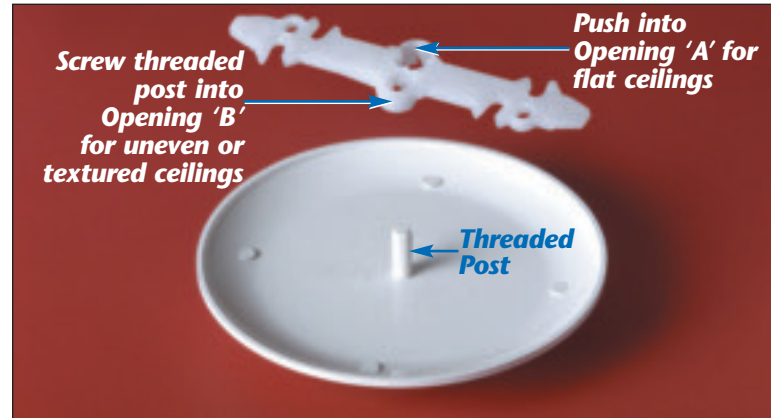
Benefits

- Attractive cover. Screws don't show on the ceiling
- Plastic eliminates the scratches you get with painted metal covers
- Covers poorly cut drywall

For Flat and Uneven Ceilings...



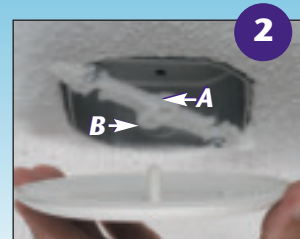
Mounting screws are invisible on the ceiling



Installation Instructions



1 Back the screws out enough to slip the bracket on.



2 Use the opening in the bracket most suitable for your ceiling condition...
'A' for flat ceilings, push post into opening to seat cover;
'B' for uneven or textured ceilings, screw threaded post into opening until tight.

Arlington Industries, Inc.

www.aifittings.com • E-mail: sales@aifittings.com
800/233-4717 • FAX 570/562-0646

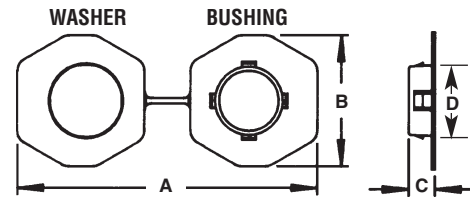
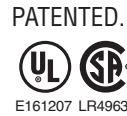
Non-Metallic Bushings for Metal Studs



FITS A STANDARD 1" KNOCKOUT

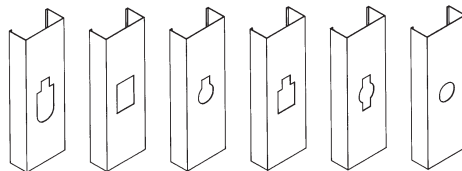
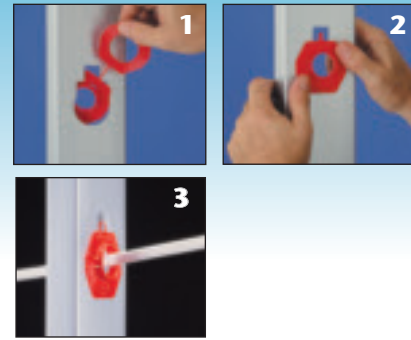
CATALOG NUMBER	UPC/DCI/NAED MFG #01 8997	STUD SIZE	STD PKG	DIM A	DIM B	DIM C	DIM D
SB13	40115	2 x 4	500	5.670	2.500	.505	1.300
SB130	40130	2 x 4	100	5.670	2.500	.505	1.300

These bushings fit existing irregular shaped holes in metal studs, alleviating the need to punch holes in metal studs, weakening the structural member. Use these bushings to comply with paragraph 300-4(b)(1) of the 2005 NEC code which states that: "In both exposed and concealed locations where nonmetallic-sheathed cables pass through either factory or field punched, cut, or drilled slots or holes in metal members, the cable shall be protected by bushings or grommets covering all metal edges and securely fastened in the opening prior to installation of the cable."

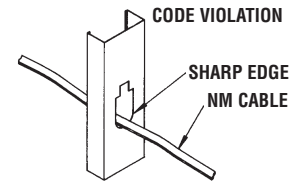


Installation Instructions

To install these bushings in an irregular shaped hole, pass one end of the joined connector through the hole in the stud. Snap the bushing and the washer ends together. There's no need to separate the two halves. If a punched hole is required, the SB13 can be installed in a standard 1" trade size, round punched hole (1-3/8" diameter). Snap the bushing end into the hole.



Common hole configurations in metal studs.

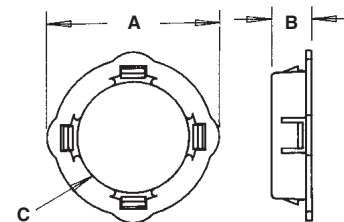


Non-Metallic Bushings for Metal Studs



CATALOG NUMBER	UPC/DCI/NAED MFG #01 8997	TRADE SIZE	STD PKG	DIM A	DIM B	DIM C
SB1	18001	1/2	1000	.940	.470	.700
SB10	18010	1/2	100	.940	.470	.700
SB3	18050	1	1000	1.750	.400	1.150
SB30	18053	1	100	1.750	.400	1.150

Note: See page M-12 for larger sizes.



Arlington Industries, Inc.



www.aifittings.com • E-mail: sales@aifittings.com
800/233-4717 • FAX 570/562-0646

Snap-In Bushings

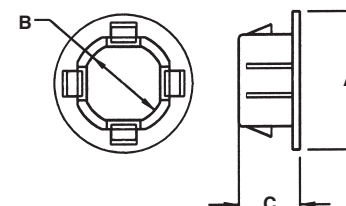
For knockouts. All-plastic, snap-in type.



CATALOG NUMBER	UPC/DCI/NAED MFG #01 8997	TRADE SIZE	UNIT PKG	STD PKG	DIM A	DIM B	DIM C
4400	04400	1/2	100	1000	1.140	.679	.505
4401	04401	3/4	100	1000	1.420	.900	.505
4402	04402	1	50	500	1.770	1.157	.505
4403	04403	1-1/4	25	250	2.281	1.509	.505
4404	04404	1-1/2	25	250	2.598	1.748	.505
4405	04405	2	20	200	2.919	2.223	.563
4406	04409	2-1/2	20	200	3.421	2.725	.563



E178435 LR49636



Snap-In Blanks

All plastic. For knockouts. Grey color.



CATALOG NUMBER	UPC/DCI/NAED MFG #01 8997	TRADE SIZE	UNIT PKG	STD PKG	DIM A	DIM B
NM900*	54000	1/2	100	1000	1.015	.468
NM901†	54001	3/4	50	50	1.250	.468
NM902†	54002	1	50	50	1.500	.468
NM903†	54003	1-1/4	25	25	1.906	.468
NM904†	54004	1-1/2	25	25	2.156	.468
NM905†	54005	2	20	20	2.750	.750

*UL and CSA listed.
†UL recognized.

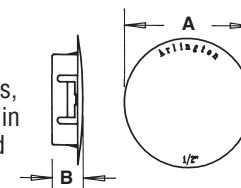


E105706 LR49636



E15331

These items cost less than steel snap-in blanks, and provide a safer installation. A metal blank in a plastic box or enclosure is not grounded and could become a shock hazard.

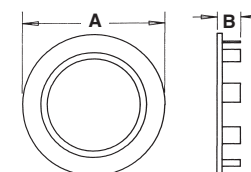


Snap-In Blanks

Plated steel. For knockouts.



CATALOG NUMBER	UPC/DCI/NAED MFG #01 8997	TRADE SIZE	UNIT PKG	STD PKG	DIM A	DIM B
900	00900	1/2	100	1000	1.070	.310
901	00901	3/4	50	50	1.235	.310
902	00902	1	50	50	1.480	.310
903	00903	1-1/4	25	25	1.800	.310
904	00904	1-1/2	25	25	2.215	.360
905	00905	2	20	20	2.675	.360





Arlington Industries, Inc.

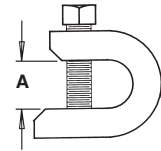
www.aifittings.com • E-mail: sales@aifittings.com
800/233-4717 • FAX 570/562-0646

Beam Clamps

Plated steel.



CATALOG NUMBER	UPC/DCI/NAED MFG #01 8997	STATIC LOAD RATING	TRADE SIZE	UNIT PKG	STD PKG	DIM A	THREADED ROD SIZE
BC25	23250	75 LBS.	1	25	100	.608	1/4-20
BC38	23380	200 LBS.	2	25	100	.930	3/8-16

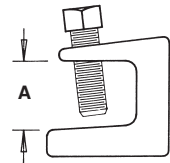


Beam Clamps

Malleable iron. Plated.



CATALOG NUMBER	UPC/DCI/NAED MFG #01 8997	STATIC LOAD RATING	TRADE PKG	UNIT PKG	STD PKG	DIM A	THREADED ROD SIZE
MBC25	34810	125 LBS.	1	25	100	.772	1/4-20
MBC25A	42321	125 LBS.	1	25	100	.772	10-24
MBC26	42326	300 LBS.	1-1/2	50	50	.878	5/16-18
MBC27	42327	300 LBS.	2	50	50	.878	3/8-16
MBC28	42328	600 LBS.	2-1/2	25	25	1.108	1/2-13

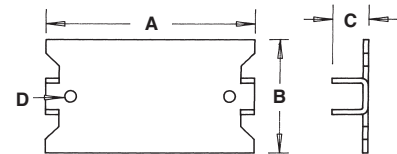


Safety Plate

Flat 16 gauge steel.



CATALOG NUMBER	UPC/DCI/NAED MFG #01 8997	TRADE SIZE	UNIT PKG	STD PKG	DIM A	DIM B	DIM C	DIM D
SP100	17100	1-1/2 x 2-3/4	100	600	2.750	1.500	.475	.155



Jack Chain

Zinc-plated steel. 100 feet per steel reel. Maximum load limit 25 lbs.



CATALOG NUMBER	UPC/DCI/NAED MFG #01 8997	SIZE	UNIT CTN	STD CTN
JC12	13120	1/2	100 ft	100 ft



Concrete Pipe Sleeves

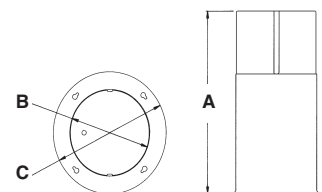
Provides an economical method of sleeving through concrete pour allowing cable or conduit to easily run from one floor to the next. Color - black.



CATALOG NUMBER	UPC/DCI/NAED MFG #01 8997	DESCRIPTION	FITS	STD PKG	DIM A	DIM B	DIM C
CPS15	72150	For 1-1/2" hole	1" pipe	10	8.500	1.625	3.125
CPS20	10960	For 2" hole	1-1/2" pipe	10	8.500	2.125	3.625
CPS30	72152	For 3" hole	2" pipe	10	8.500	3.125	4.625
CPS40	10962	For 4" hole	3" pipe	10	8.500	4.125	5.625
CPS50	72154	For 5" hole	4" pipe	10	8.500	5.125	6.625
CPS60	10964	For 6" hole	5" pipe	10	8.500	6.125	7.625

Features and Benefits

- Stackable for extra deep pours
- Venting prevents sleeves from sticking together when wet
- Plastic

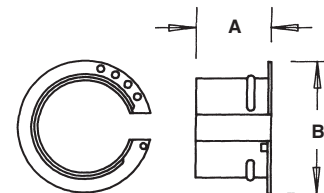


Adjustable Throat Liners

To be installed in fittings after conduit, fitting and wire are in place. Allows installation to meet local electrical code. Non-metallic.



CATALOG NUMBER	UPC/DCI/NAED MFG #01 8997	TRADE SIZE	UNIT PKG	STD PKG	DIM A	DIM B
4001	04001	1/2	25	100	.670	.900
4002	04002	3/4	25	100	.710	1.220
4003	04003	1	25	100	.880	1.450
4004	04004	1-1/4	10	40	1.015	1.735
4005	04005	1-1/2	10	40	1.015	2.050
4006	04006	2	10	40	1.250	2.312



Duct Seal Compound

Asbestos-free, non-drying, non-toxic, permanently soft.



CATALOG NUMBER	UPC/DCI/NAED MFG #01 8997	TRADE SIZE	UNIT PKG	STD PKG
DSC1	43600	1 LB	1	50
DSC5	43605	5 LB	1	10



Features and Benefits

- Adheres to most clean, dry surfaces
- Will not adversely affect plastic materials or corrode metals



Arlington Industries, Inc.

www.aifittings.com • E-mail: sales@aifittings.com
800/233-4717 • FAX 570/562-0646

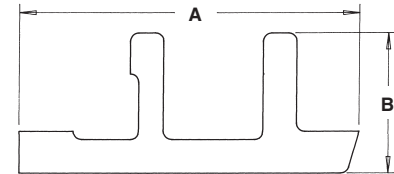
Switch Box Supports

Galvanized steel.



CATALOG NUMBER	UPC/DCI/NAED MFG #01 8997	UNIT PKG	STD PKG	DIM A	DIM B	MATERIAL DIM
SBS	18055	100	1000	5.135	2.135	.020

UL/CSA NOT APPLICABLE

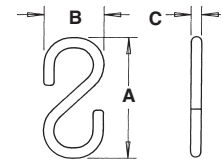


S-Hooks

Plated steel. Maximum load limit 25 lbs.



CATALOG NUMBER	UPC/DCI/NAED MFG #01 8997	SIZE	UNIT PKG	STD PKG	DIM A	DIM B	DIM C
SH1	18100	1-1/4-.106	100	100	1.225	.605	.106
SH2	18200	1-1/2-.135	100	100	1.531	.975	.185



Box-to-Box Locknut and SNAP-TITE® Connectors

Zinc die-cast.



260

260ST

CATALOG NUMBER	UPC/DCI/NAED MFG #01 8997	TRADE SIZE	UNIT PKG	STD PKG	DIM A	DIM B	DIM C	DIM D
260	00260	1/2	25	250	.855	.375	1.120	.100
260ST	06000	1/2	25	250	1.056	.478	1.105	.100

PATENTED.

SNAP-TITE® products have been tested and listed by UL in accordance with UL's ground fault requirements. For additional information see page 6.



E60812 LR49636

